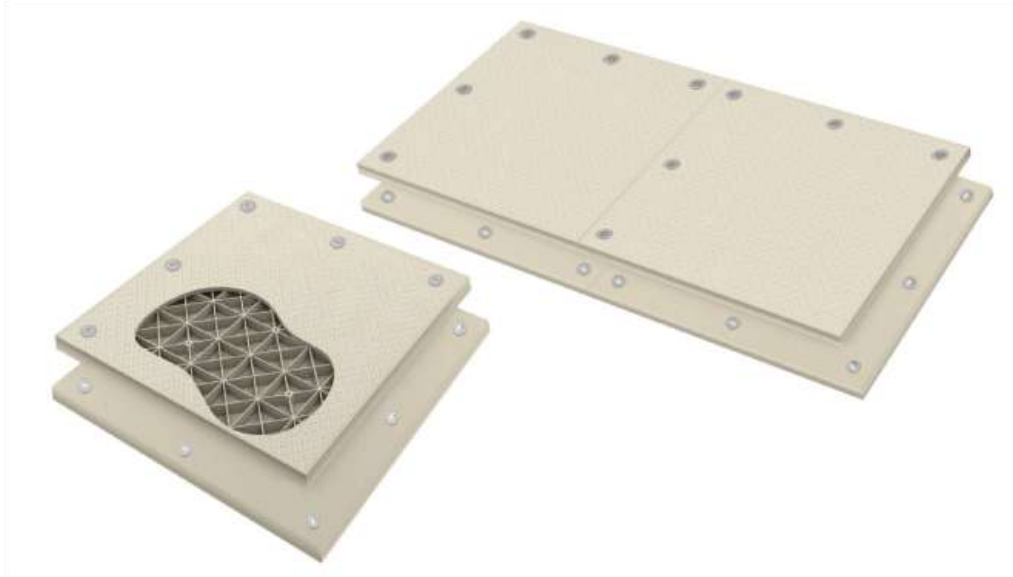


MEGADECK™

MEGADECK PRODUCT SPECIFICATIONS

**Actual Mat Size**

7.5 ft (L) x 14 ft (W) x 4.25 in (H)
2.286 m (L) x 4.2672m (W) x 10.795 cm

Useable Mat Size

Due to flange size:
6.5 ft (L) x 13ft (W) x 4.25 in (H)
1.812 m (L) x 3.9624 m (W) x 10.795 cm

Weight

1,050 lbs / 477.3 kg

Colors

Beige. Custom colors available.

Mat Design

Each MegaDeck mat is molded from a single piece of HDPE, with special proprietary fillers and additives that provide additional strength, rigidity, and impact resistance.

Mat sections incorporate a weight-saving ribbed interior structure that provides tremendous weight-bearing capacity, while allowing for sections to be easily handled by a standard forklift.

A solid HDPE plate is bolted to the top of each mat to close off the ribbed interior and to provide a water seal that prevents dirt, water, and debris from penetrating the mat. Each MegaDeck top section is sealed with a specialized gasket that handles mat flexure and other everyday abuses.

MegaDeck mats incorporate flanges on both sides that allow mats to connect to adjacent panels. Flanges are solid HDPE for added durability. Each flange incorporates a heavy radius design, providing additional strength and shear resistance. Once nested into adjacent panels, the solid HDPE flange system provides rigidity and strength.

Each mat may be reconfigured into 7.5' x 7.5' (2.286 m x 2.286 m) (half mats) at the user's request, allowing for greater layout flexibility. Half sections may be used to create straight edges as desired and allow for more options in site design and transportability.

Material Composition

Each MegaDeck mat is manufactured using the highest quality virgin HDPE, with special impact modifiers and fillers to accommodate thermal expansion, incorporate UV resistance, and to provide tremendous strength. An anti-static (static dissipative) additive is molded into each mat, to allow for use in environments where static could pose a problem.

Connection System

MegaDeck sections may be interconnected using MegaDeck's proprietary connection system. This connection system consists of a self-aligning locking mechanism that connects the overlapping flange from adjacent mats, allowing sections to bear tremendous weights. An ultra-secure connection between your MegaDeck panels is achieved with a simple twist of a standard hex key. All lock components are made from heavy-duty cast aluminum that will not rust, break, or corrode.



Surface Traction Design

Each mat incorporates our low-profile "pedestrian" design that provides traction and slip resistance in the field. The pattern is designed to be easily cleaned and to function well with mud, sand, dirt, and other common on-site substances such as oil and grease. This design provides good traction for pedestrians, vehicles, and all types of rolling equipment, including dozers and other tracked vehicles.

Packing and Loading

Mats may be loaded into standard ISO containers and are specially designed to maximize volume in containers for overseas transport. Mats are easily loaded onto BOTH flat bed and enclosed van trucks, allowing maximum flexibility in transport.

U.S. standard truck: 42 mats – 3 stacks each, 14 mats high

40ft ISO shipping container: 42 mats – 2 stacks each, 17 full mats high + 1 stack, 16 half mats high

20ft ISO shipping container: - 18 mats - 1 stack, 18 full mats high

Cleaning Method

Sections may be cleaned with a standard industrial grade pressure washer, brushes, and ordinary cleaning solutions. MegaDeck mats are easy to maintain and to clean and will not absorb water or other contaminants.

RFID Chip

Optional RFID chips are available for each mat and are incorporated into the core of the mat during the manufacturing process. Simply specify if you are interested in tracking your mats using a computerize inventory control and tracking system.